



Adds Value to Technology

Professional Imaging Systems

Industry Display Solutions

Smart Building
and Housing

05



The mall

06



Finance

07



Education

08



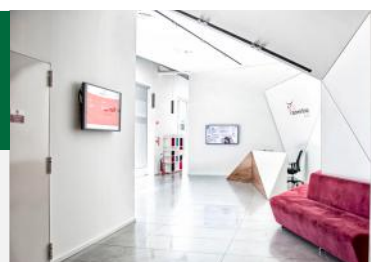
Airpot

09



Public and
Private
Institutions

10



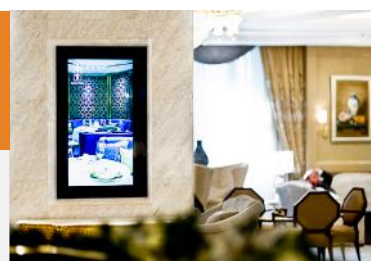
Shopping
centre

11



Tourism and
Hospitality
Management

12



Restorant

13



Health

14



Transportation

15





About Erpa...

Continuing its activities in the field of technology in Istanbul Karaköy since 1995, ERPA has become the solution center of the sector by breaking new ground in the field of industrial technology.

Erpa, which takes place in the list of "Turkey's top 500 IT Companies" every year by carrying out successful projects in the country; and abroad, thanks to the supply network it has established, it stands out with its service in different locations.

Establishing the first monitor and printer laboratory in Turkey, Erpa has transferred its knowledge of imaging technologies to its own production TOCHI brand, and has become one of the few professional imaging and information systems manufacturers today.

In addition to professional display and information systems, Tochi has the capacity to project and produce non-standard display systems from 4.5" to 110", such as videowall, digital signage, kiosk, in-car monitors, indoor and outdoor monitors, cnc monitors, smart building systems.

Erpa, which has quality certificates and certificates in international standards, is committed to ethical values. It acts with the principle of respect for the institutions and organizations it serves, its employees, solution partners and the environment. ERPA contributes to the prominence and continuous development of its solution partners by combining quality equipment, trained workforce, years of knowledge and experience.

Quality certificates

ISO 9001,
After Sales Service Qualification
Certificate, EMC Certificate,
CE Certificate,
EN50155 Certificate,
ECR10 Certificate,

Digital signage solutions

WHY DIGITAL SIGNAGE?

Take Control of Your Screens!

Tochi Professional Digital Signage Display and Management Platform.

Digital signage systems are the online management of information and advertising content centrally over a network.

- Informing your target audience, making campaigns and product promotions.
- It can be digitalized and managed online from classical promotional, information and advertising tools such as posters, panel and banners.
- switch to digital system
- Creating and increasing brand perception.
- Earning income from the sale of advertisements you publish through these systems.

With Tochi digital signage solutions, it allows you to publish your content easily and professionally.



Smart Building Solutions

Stylish design and easy management.

Locally produced wonder.

Smart buildings, which have been at the center of our lives in recent years, continue to grow and proliferate at an unprecedented rate. Smart building solutions are an integrated system that can be managed independently or centrally. It allows you to dominate every point of your building and to control every area.

Advantages of Tochi Smart Building Displays;

- Custom design and production power.
- Our products with IP65 protection class are not affected by environmental factors such as dust, rain and snow.
- Shockproof
- It provides high image quality under sunlight.
- It operates smoothly at all ambient temperatures between -30°C and 55°C.
- It is designed for 7/24 working environments.
- Thanks to less energy consumption, it protects both the nature and your budget.

Display solutions

Information screens

Video wall

Security screens

Kiosk

Built-in display

Mirror tv

Elevator screens

Climate screen

Kitchen tv





Mall Solutions

Incredible image quality every time.

Locally produced wonder.

Shopping malls are areas where people show high demand for shopping. Increase your brand awareness and reputation with visual-based tochi smart screens by getting rid of inefficient methods such as brochures, flyers, banners that cost you additionally and cannot deliver the message your business wants to convey accurately and quickly. During the time your customers spend, you can bring them closer to your products and services.

Advantages of Tochi Mall Screens;

- Ability to control from a center,
- It is produced on a 7/24 working basis,
- There are passive and air-conditioning options for indoor and outdoor spaces,
- Continuous supply option,
- It offers high bright and vivid screen quality.
- It is resistant to impacts in public areas.
- It saves you from paper costs and enables you to provide more effective information and guidance to your customers.

Display solutions

| Information screens

| Video wall

| Security screens

| Kiosk

| Built-in display

| Mirror tv

| Elevator screens

| Climate screen

| Parking payment screens



Finance Solutions

Intelligent and highly efficient.

Locally produced wonder.

In financial institutions and banks, smart technology is directly related to convenience and high efficiency. Easy banking with 'smart' interactions; It can meet the needs of the new generation with touch sensitive and higher resolution Tochi LED displays. Tochi imaging systems can operate in harsh conditions and offer efficient communication features, including remote management. These smart devices can be programmed to recognize customer preferences for a more personalized experience.

Advantages of Tochi Finance Screens;

- It can be controlled from a single center,
- We have touch options on the screens.
- It is impact resistant.
- It has a great effect on completing bank transactions much faster.
- It can be used comfortably in every field where information and guidance is needed.

Finance Solutions

Information screens

Video wall

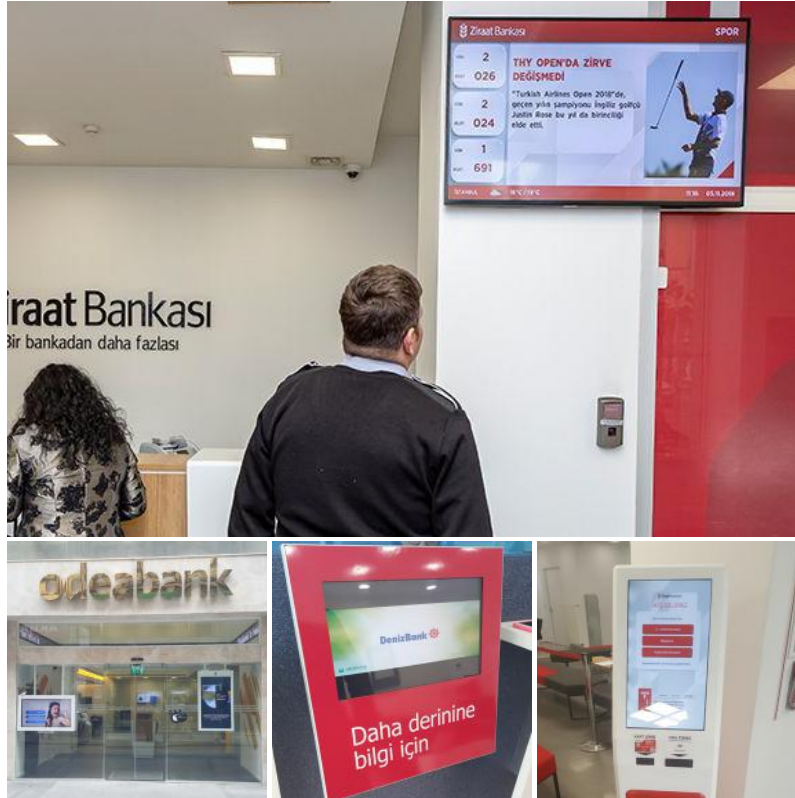
Security screens

Kiosk

Totem

T. room screens

Front door screens



Educational Institution Solutions

Interesting. Sensitive. Multidirectional..
Locally produced wonder.

Education is undergoing a great change with the developing technology. The majority of educational institutions have started to upgrade their technology in order to digitalize education and increase the success rate. Thanks to Tochi smart education solutions, you can increase class participation, understanding and success rate by providing an effective and enjoyable user experience. With intuitive and easy-to-use tools, you can help your educators make the most of their time and energy.

Advantages of Tochi Educational Screens;

- Wired and wireless connectivity
- Multiple ports (USB, HDMI, VGA)
- Detects interactive pen and finger at different points on smart boards. Thus, it allows more than 1 person to use the board at the same time.
- Notebook projector and screen are not needed and it does not cause shadow problem on the image as in projectors.
- Smart boards enable permanent learning with the recording feature of lessons.

Educational Institution Solutions

| Smart board

| Digital Chair

| Video wall

| Kiosk

| Totem

| Menu Board

| Information screens

| Security screens

| Front door screens



Airport Solutions

Interact easily with your guests.

Locally produced wonder.

Airports are areas with high human traffic. Tochi digital screens are of great importance for effective advertising and information work in these areas. Advertisement of cafes, restaurants and shops in the airport videowalls and totems are of great importance.

Advantages of Tochi Airport Screens;

- It is effective in accelerating human traffic.
- Cafe etc. Quality screens will help in advertising the places.
- Information screens made to reduce busy waiting times will relax you.
- Flight information screens, check-in kiosks, advertising totems and videowall products can be positioned at every point of the airport.

Airport solutions

- | Information screens
- | Video wall
- | Security screens
- | Kiosk
- | Biometric switch
screens
- | Parking lot screens
- | Climate screen



Public and Private Institution Solutions

Very efficient. Innovator. Flawless.

Locally produced wonder.

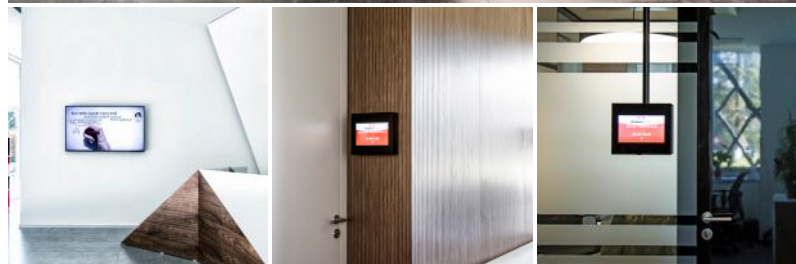
While digital screens change the face of our corporate spaces, they improve office efficiency and collaboration. It enables people to interact at the same time in high-rise buildings with large areas. Tochi displays best-in-class display performance
Designed for your unique needs. LED videowall turns remotely manageable displays and computers into platforms that communicate with each other.

Advantages of Tochi Public and Private Institution Displays;

- Remotely manageable displays and computers communicate with each other turned into platforms.
- Best-in-class display performance tailored to the unique needs of applications.
- It enables people to interact at the same time in high-rise buildings with large areas.
- It offers system monitoring, advertising, productivity, communication and entertainment to its visitors in its environments.

Public and Private Institution Solutions

- | Information screens
- | Video wall
- | Security screens
- | Kiosk
- | Totem
- | T. room screens
- | Front door screens
- | Elevator screens
- | Table with elevator screen



Store Solutions

High brightness and very smart.

Locally produced wonder.

Use Tochi's high-impact professional displays to optimize your brand identity and increase your awareness in busy retail environments and greatly increase the popularity of your store by increasing the number of people visiting your store. You can create an unforgettable store atmosphere by appealing to your customers' imaginations by using our ultra-thin bezel high-definition displays, available in sizes up to 110".

Advantages of Tochi Store Displays;

- Wired and wireless connectivity
- It is high resolution and thin enough to meet your needs.
- It is designed vertically and laterally according to the needs in order to be able to communicate directly with the customer in the store.
- There is no need for a projector and a screen, and it does not cause shadow problems on the image as in projectors.
- It helps you to convey your seasonal and tactical messages in the store.

Store Solutions

| Information screens

| Video wall

| Security screens

| Kiosk

| Totem

| Payment screens

| Price screens



Tourism and Hospitality Solutions

Make your guests comfortable.

Locally produced wonder.

Thanks to smart digital screens that can be used in all areas of hotel and touristic businesses, you can provide your customers with impressive environments as well as making your business look professional. You can easily perform the tasks of informing, welcoming, publishing your announcements and informing about events from a single center thanks to these screens.

Advantages of Tochi Tourism and Hospitality Screens;

- It provides instant orientation and information to your customers.
- It enables you to prepare advertisement and brochure works effortlessly without incurring the cost of paper.
- Your events and announcements You can do it easily thanks to the videowall screens.
- Thanks to the smart screens installed in the rooms, you can collect the orders and demands of your guests, record these calls and measure your service quality by reporting them.

Tourism and Hospitality Solutions

| Information screens

| Video wall

| Security screens

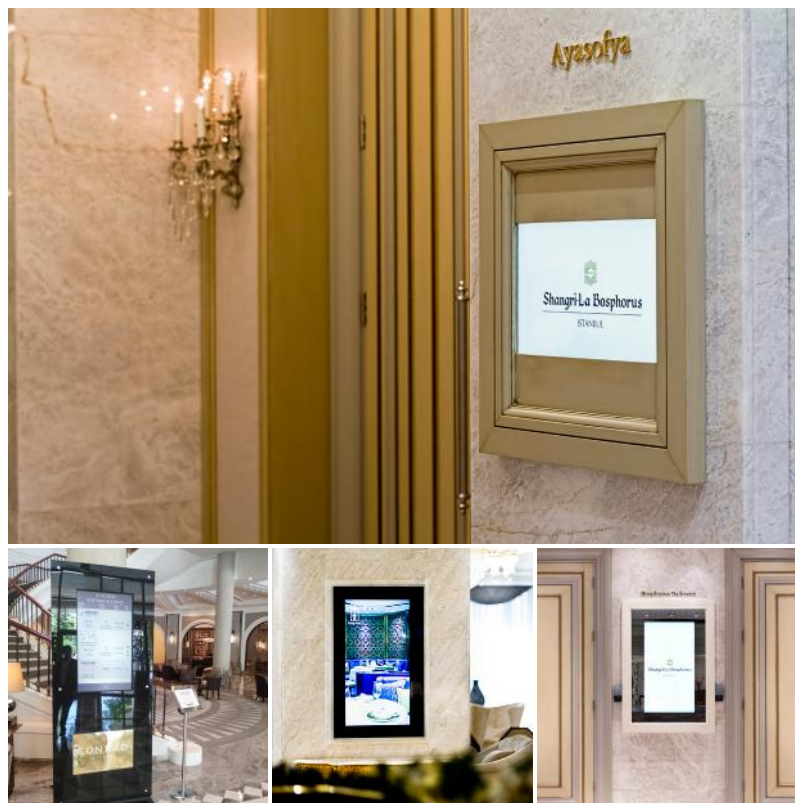
| Kiosk

| Totem

| Meeting room screens

| Front door screens

| Elevator screens



Restaurant Solutions

Dynamic. Interactive. Practical.
Locally produced wonder.

With Tochi screens, you can increase customer interaction by publishing menu information, welcome messages, campaign announcements in your restaurant. Varying prices and printing and distributing your promotions with traditional printing methods bring high costs. Instead of these costs, you can broadcast faster and more effectively thanks to digital screens.

Advantages of Tochi Restaurant Displays;

- Wired and wireless connectivity,
- Menu board screens showing the menus save you from dealing with extra paper printing costs.
- Thanks to high resolution screens, you can present your images in a better quality way.
- Order taking tablets allow you to interact with all employees. Tablets used instead of old-fashioned tickets increase your reputation.
- Eliminates cable clutter thanks to easy installation.

Restaurant solutions

- | Menu board
- | Information screens
- | Video wall
- | Security screens
- | Order tablets
- | Order screens



Health Solutions

Stunning image quality.

Locally produced wonder.

Tochi displays provide comprehensive solutions that meet your imaging needs in healthcare centers such as Hospitals / Clinics.

Thanks to these effective solutions, the chaos in hospital entrances and patient waiting areas ends. In addition, by using the digital screens inside the hospital, you can give health-related advice messages and emergency messages to the relevant personnel in case of emergency.

Advantages of Tochi Health Screens;

- Antibacterial screen production.
- Multiple ports (USB, HDMI, VGA)
- It is designed for 7/24 working environments.
- Wired and wireless connectivity,
- Shock resistant
- Produced in DICOM LUT standards.
- From where it left off after a power outage ability to continue.
- Cable thanks to easy installation removes the confusion.

Healthcare solutions

Operating room screens

Information screens

Security screens

Video wall

Security screens

Medical screens

Elevator screens

Totem

Front door screens



Transportation Solutions

Powerful always-on displays.

Locally produced wonder.

The public transport sector is a complex structure that combines infrastructure, vehicles and operations. In this structure, the safe and efficient integrated operation of passengers and operating personnel is the basic requirement. Technology has been a huge factor in the advancement of the transportation industry.

Advantages of Tochi Transportation Screens;

- Custom design and production power.
- Multiple ports (USB, HDMI, VGA)
- Provides high image quality under sunlight. (Optional)
- Impact resistant.
- Ability to resume from where it left off after power failure.
- Eliminates cable clutter thanks to easy installation.

Transportation Solutions

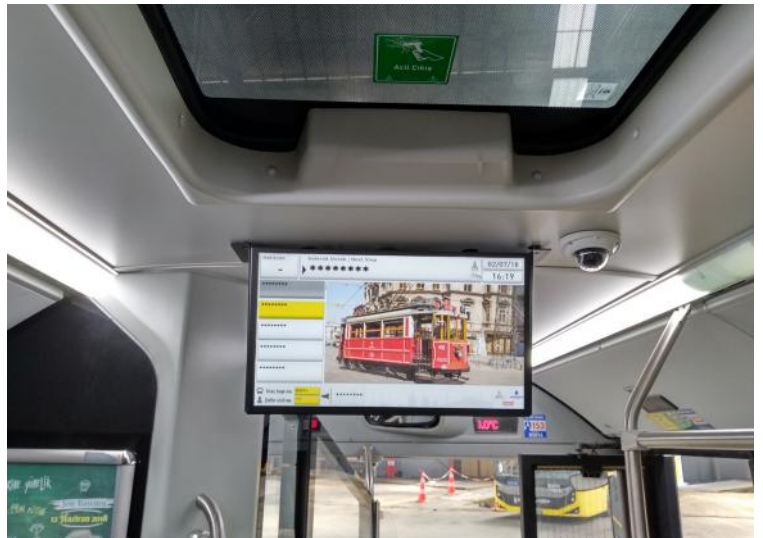
| Smart stall screens

| Passenger information screens

| Passenger information computer

| Akbil pc

| Train and Metro screens





Erpa Communications all rights reserved.

Erpa İletişim ve Elektronik Sanayi Ticaret Limited Şirketi.

Kemeraltı Cad. Şefkat İş Hanı No: 1-3 Kat: 7 Karaköy / İstanbul

Phone : 0212 293 58 26 - Fax : 0212 293 47 69

www.erpateknoloji.com erpa@erpamonitor.com

erpateknoloji.com/erpa-katalog.pdf